

# Psoriasis and psoriatic arthritis – the relationship you probably haven't heard about

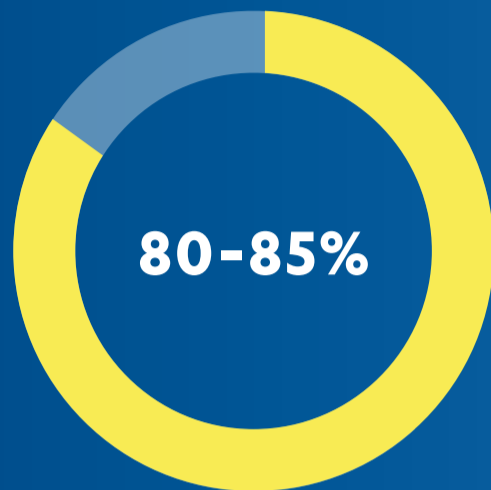


**Psoriatic arthritis can cause stiff, painful joints and sausage-like swelling of fingers or toes.**

Did you know almost



people with psoriasis could develop **psoriatic arthritis?**<sup>1,2</sup>



Approximately **80–85%** of people who develop psoriatic arthritis already have psoriasis, but it is possible to develop psoriatic arthritis first<sup>5</sup>



Psoriatic arthritis can affect men and women **at any age**<sup>1,4</sup>



Do you have psoriasis? Did you know that it can be more than skin-deep? The same disease that causes your psoriasis can also affect your joints.

This is called **psoriatic arthritis or 'PsA'**.



Chronic inflammatory disease that causes **inflammation and swelling in the joints of the hands and feet**, which leads to pain, stiffness and physical changes to these joints<sup>1,2,3</sup>



Diagnosing and treating psoriatic arthritis earlier can help with the relief of pain and inflammation. It may also help prevent joint damage over time.<sup>2,5</sup>

**Signs and symptoms vary from person to person, and are not exclusive to psoriatic arthritis...**<sup>1-4,6</sup>



Tiredness or fatigue



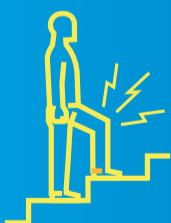
Swollen fingers or toes



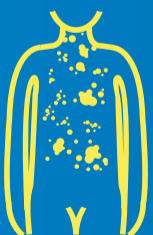
Stiffness or pain in joints



Swelling around tendons and ligaments



Difficulty walking or climbing stairs



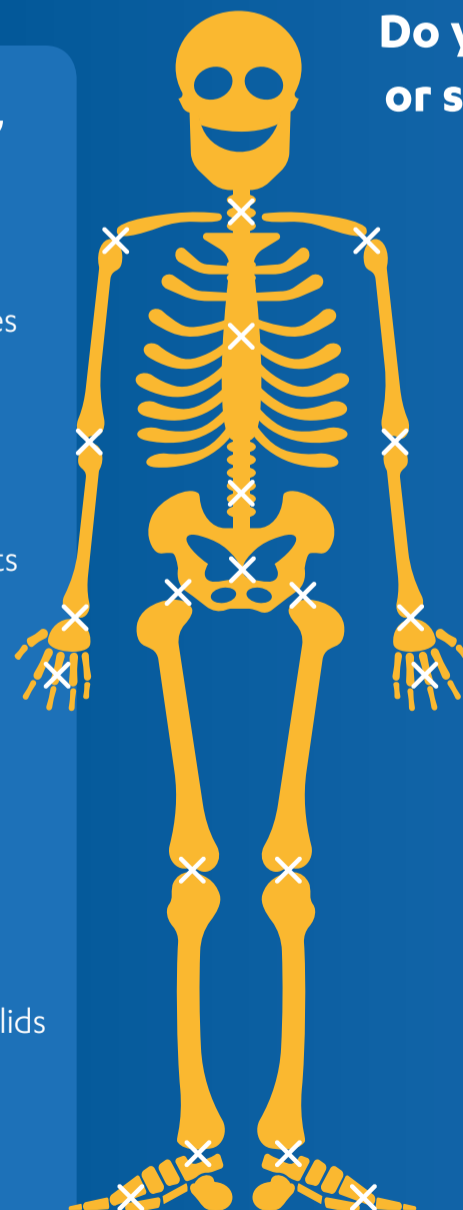
Raised scaly patches on skin



Change in smoothness or colour of nails, or separation of nail from nail bed



Dry eyes, swollen eyelids or changes in vision



**Do you have pain, swelling or stiffness in any of these joints?**<sup>3</sup>



**Did you know?**

Joints in the hands and feet are most commonly affected by psoriatic arthritis.



If you have psoriasis and notice any of these signs and symptoms, talk to your doctor who will be able to advise if you require further assessments.<sup>5</sup>

This infographic has been funded by Janssen and developed in collaboration with the European Umbrella Organisation for Psoriasis Movements (EUROPSO).

1. Gladman D, et al. Psoriatic arthritis: epidemiology, clinical features, course, and outcome. *Ann Rheum Dis* 2005;64(Suppl II):ii14–ii17  
2. Haroon M, et al. High prevalence of psoriatic arthritis in patients with severe psoriasis with suboptimal performance of screening questionnaires. *Ann Rheum Dis* 2013;72:736–740  
3. Acosta FML, et al. Peripheral joint involvement in psoriatic arthritis patients. *Clin Exp Rheumatol* 2015;33(93):526–530

4. Liu JT, et al. Psoriatic arthritis: Epidemiology, diagnosis, and treatment. *World J Orthop* 2014;5(4):537–543  
5. Villai AP, et al. Prevalence of Undiagnosed Psoriatic Arthritis Among Psoriasis Patients: Systematic Review and Meta-Analysis. *J Am Acad Dermatol* 2015;72(2):242–248  
6. Haddid, A. et al. Comorbidities in Patients with Psoriatic Arthritis. *Rambam Maimonides Med J* 2017;8(1):e0004

Zinc job number: PHEM/STE/0817/0001 Date of preparation: August 2017